



<b>Punta Rassa Condominium Association</b> 15008 Punta Rassa Road Fort Myers, FL 33908 Tel. (239) 466-9148 Fax. (239) 466-9331 <a href="http://www.puntarassa.org">www.puntarassa.org</a>	<b>Manager: Michael Bancroft</b> <a href="mailto:manager@puntarassa.org">manager@puntarassa.org</a>  <b>Office: Tracey Lewis</b> <a href="mailto:admin@puntarassa.org">admin@puntarassa.org</a>	<b>Board of Directors</b> <b>President: Joe Faulhaber</b> <b>Vice President: Bob Mizek</b> <b>Treasurer: Bruce Heymann</b> <b>Secretary: Edna Luther</b> <b>Director: Patricia Baldwin</b> <b>Director: Dave Nielsen</b> <b>Director: Chris Trzeciak</b>
--	---	---

## Hurricane Preparedness Plan for Punta Rassa Residents

Note: Management has a separate, detailed preparedness plan for securing our property

**Hurricane Season is June 1 through November 30.**

Lee County is a tropical paradise, but along with Florida's year-round sunshine comes the risk of hurricanes. We need everyone to be prepared.

**IF YOU KEEP A VEHICLE AT PUNTA RASSA WHILE YOU ARE AWAY, YOU MUST MAKE ARRANGEMENTS TO HAVE IT MOVED TO A SAFE LOCATION AWAY FROM PUNTA RASSA PREMISES AT THE FIRST MENTION OF A HURRICANE WATCH. IF NOT, YOUR VEHICLE WE BE TOWED AT YOUR EXPENSE. THE ASSOCIATION IS NOT RESPONSIBLE FOR YOUR VEHICLE.**

### **IF YOU DECIDE TO STAY DURING A HURRICANE**

Even if you stay, **you must move all vehicles off the property** and to a safer location. **Do this at the first mention of a hurricane watch. If you do not move your vehicle, it will be towed, at your expense.**

Our new Flood Risk America flood panels will be put over all mechanical rooms, elevator rooms, pump rooms and the lobby doors on the waterside at the first mention of a hurricane watch. **As soon as necessary, all elevators will be brought to the top floor and locked.** The entire lobby will have panels covering all doors the next day. **Your only means of egress will be the stairwells.** If you cannot climb down the stairs on your own, you should consider going to a safer place, inland, at the first mention of a hurricane watch.



If you stay onsite during a hurricane, you must inform the Punta Rassa office by phone (239) 466-9148 or email [manager@puntarassa.org](mailto:manager@puntarassa.org) and give your building number, unit number, and cell phone number if you have one. Also, give the office an emergency contact name and number. After the danger has passed, we will check on you and the condition of your unit.

**If there is a tidal surge that is sufficiently high to flood our generators, there will be no power at all and no water to the higher floors.**

**The elevators will be shut down and raised to the top floor to avoid damage and will not be turned on again until conditions permit.** If you are not able to use the stairs, please make other living arrangements; with a friend, relative or a hotel at a safer location. We want you to be safe!

### **Things you must do if you decide to stay:**

- 1. Remove everything from balconies and patios. Make sure all your windows and doors are closed tightly and your storm shutters are secure.**
2. Fill your bath tub with water. It is important to keep your bathtub full of water so you will be able to use the water to flush your toilet. Make sure the tub will hold water. You may have to put a stopper in to keep it from draining. Please test your tub ahead of time.
3. Purchase other containers, e.g. buckets, plastic tubs, and fill with water.
4. Purchase wet wipes and disinfectant wipes.
5. Purchase plenty of drinking water - enough for at least 5 days.
6. If you are going to use canned food products, make sure you have a manual can opener.
7. When it is safe to go outside, the charcoal grills will be available. Make sure you have a small quantity of charcoal, lighter fluid and matches or a long-handed lighter. The gas grills will be removed during the storm and reinstalled as quickly as possible. **Use of charcoal or gas grills on your lanai or on the walkways is prohibited.**
8. During the "warning period," you might consider cooking food from your freezer so it would be available during power outages.
9. Bring in a supply of dry ice from Publix, Winn-Dixie or Walmart and purchase an ice chest.
10. Have flashlights, extra batteries, and/or battery powered lanterns and radio on hand.
11. If you have a pet, make arrangements for your pet's litter if unable to go outside (pet pads, litter boxes, and plenty of plastic bags).



**Lee County has a checklist of items you should have on hand.**

Have	Need	N/A	Food Related
			1. Drinking water – 1 gallon, per person, per day
			2. Non-perishable food/special dietary needs
			3. Manual can opener
			4. Juice/soft drinks/instant coffee/tea bags/sweetener
			5. Cooler for food storage (wheels make moving easier)
			6. Cooler to transport ice (wheels make moving easier)
			7. Freeze water in jugs or zip lock bags to keep food and beverages cold
			8. Lighter/matches
			9. Pots/pans/Camp stove or grill
			10. Aluminum foil, plastic wrap
			11. Paper plates, cups, cutlery

Have	Need	N/A	Personal Items
			1. Blankets, pillows, sleeping bag, cot
			2. Toiletries / personal hygiene (tooth brush, tooth paste, soap, shampoo, deodorant, shaving materials, etc.)
			3. Spare glasses, contacts and cleaning solution
			4. Hearing aid and spare batteries
			5. Extra clothing/rain gear/closed toe shoes
			6. Personal items such as cards, books, quiet games, iPad/tablet with charger
			7. Infant and/or senior supplies
			8. Important papers including valid identification
			9. Spare keys (home, cars, boats, storage lockers)
			10. Cash/Credit cards/change/checks
			11. Pens/pencils/paper
			12. Lawn chairs / folding chairs



Have	Need	N/A	Medical
			1. Two-week supply of prescribed medication and over-the-counter
			2. Cooler with ice for medications, if needed
			3. Medical equipment & assistive devices
			4. Medical alert tags or bracelets that identify your disability-related needs

Have	Need	N/A	Pets/Service Animals
			1. Water – 1 gallon per animal, per day
			2. Crate or carrier for each animal
			3. Food/treats
			4. Toys/comfort items
			5. Clean-up supplies
			6. Immunization records/photos

Have	Need	N/A	Safety Equipment
			1. Battery-operated radio, flashlight, television, clock
			2. Extra batteries
			3. NOAA weather radio
			4. First Aid Kit
			5. Landline phone
			6. Chemical light sticks
			7. Whistle



Have	Need	N/A	Miscellaneous
			1. Important papers
			2. Keepsakes / significant photos
			3. Cash, coins, credit cards, travelers checks
			4. Pre-paid telephone cards
			5. Maps and evacuation information

**If you have a pet:**

- Make sure your pet wears an ID tag with your name, address, phone number, and proof of inoculations. Carry a picture of your pet. You might want to ask your vet about microchip implants for your pet in case you get separated.

**EVEN IF YOU DECIDE TO STAY, CONDITIONS MAY CHANGE AND YOU HAVE TO LEAVE QUICKLY**

- Always have a small emergency kit packed and ready to take with you. This should include clothing, medications, cash, identification, bottles of water and nutritious snacks.



## IF YOU DECIDE TO EVACUATE

1. Secure your unit. Remove everything from your balconies.
2. Securely close and lock windows and sliding glass doors. If you have shutters, close them.
3. Place towels on all window and doorsills in case of water seepage.
4. Do **not** apply tape to the window. It has been recommended that you place a towel between the door wall and back sill (back dam as it is referred to).
5. Turn off your water. Disconnect all electrical items except your refrigerator at the switches in the breaker panel box. Set the refrigerator and freezer to their coldest settings.
6. Store valuables and personal papers in a safe place. You might want to enclose them in watertight plastic bags and keep them with you if possible.
7. Make sure your gas tank is full, windshield wipers are in good condition and air pressure is good in your tires.
8. Purchase a cell phone charger that can be plugged into your vehicle.
9. Please make sure the Punta Rassa Condominium Association Administrative Office has your contact information and a key to your unit. We will make inspections after the storm and notify you of any damage.



## Make an Evacuation Plan

Develop a family hurricane preparedness plan before an actual Evacuation storm threatens your area. It is important to consider the following points:

1. **If ordered to evacuate, do not wait or delay your departure.** If possible, leave before local officials issue an evacuation order for your area. Even a slight delay in starting your evacuation will result in significantly longer travel times as traffic congestion worsens.
2. **You only need to evacuate tens of miles, not hundreds!** Select an evacuation destination that is nearest to your home, preferably in the same county, or at least minimize the distance over which you must travel in order to reach your intended shelter location. In choosing your destination, keep in mind that the hotels and other sheltering options in most inland metropolitan areas are likely to be filled very quickly in a large, multi-county hurricane evacuation event.
3. If you decide to evacuate to another county or region, be prepared to wait in traffic. The large number of people in this state who must evacuate during a hurricane will probably cause massive delays and major congestion along most designated evacuation routes; the larger the storm, the greater the probability of traffic jams and extended travel times.
4. If possible, make arrangements to stay with the friend or relative who resides closest to your home and who will not have to evacuate. Discuss with your intended host the details of your family evacuation plan well before the beginning of the hurricane season.
5. If a hotel or motel is your final intended destination during an evacuation, make reservations before you leave. Most hotel and motels will fill quickly once evacuations begin. The longer you wait to make reservations, even if an official evacuation order has not been issued for your area or county, the less likely you are to find hotel/motel room vacancies, especially along interstate highways and in major metropolitan areas.
6. If you are unable to stay with friends or family and no hotels/motels rooms are available, then as a last resort go to a shelter. Remember, shelters are not designed for comfort and do not usually accept pets. Bring your DISASTER SUPPLY KIT with you to the shelter.
7. Make sure that you fill up your car with gas, before you leave.



SPECIAL MEDICAL NEEDS PROGRAM  
LEE COUNTY EMERGENCY MANAGEMENT  
PO Box 398, Fort Myers, FL 33902-0398  
For information call: 239-533-0640  
Fax: 239-477-3636  
Email: EMspecialneeds@leegov.com

## Lee County Has a Special Medical Needs Program

The Special Needs Program is available to all Lee County residents at no cost. It provides shelter for those who live in a home and/or area that is not safe from storm surge or wind, and have no other safe place to go. It also provides transportation to a shelter for those residents who do not have a way to get there. You must register to receive these services by completing the Special Needs Program application.

Registering with the Special Needs Program does not guarantee you will be assigned a space in the Special Medical Needs Shelter. Your application will be reviewed by the Department of Health, and you will be assigned to a shelter where your needs can be managed.

### **Some things you should know about the program:**

- You must update your application information every year by calling (239) 533-0640.
- We stop processing applications when Lee County enters the five-day forecast cone of a storm, so submit your application early in the season.
- Not every shelter will open. Only those safe from storm surge and wind for each particular storm will open.
- Emergency Public Shelters are open to everyone and do not require pre-registration.
- Bring to the shelter things you need to survive, such as prescriptions, personal hygiene items, sleeping bag, cot, pillow, change of clothes, glasses, special dietary needs, books/magazines/cards or other things to help pass the time while sheltering.
- Food and water will be provided, but we suggest you bring some food and drinks with you.
- Service animals are allowed in all shelters.
- You can bring your dog or cat to shelter with you at the General Population and Special Medical Needs Shelters. They will be housed and sleep in a different area from you, but you will have access to them for feeding, walking and spending time.



### **What you need to know about the Special Medical Needs Shelter:**

- The Special Medical Needs Shelter will be open for those with medical needs that require electricity, such as oxygen dependence, dialysis, ventilators, nebulizers, etc.
- You must pre-register for the Special Medical Needs Shelter using the application above.
- You need a companion/caregiver to accompany you during the time you shelter, as we have a limited number of staff working.
- After a shelter has been assigned to you by Dept. of Health, you will receive a confirmation letter and instructions to advise what to expect if shelters are opening.
- You will receive a call to let you know when we are opening the Special Medical Needs Shelter.
- If you have questions about the Special Needs Program, call 239-533-0640.

### **Pet-Friendly Shelter**

In a hurricane, pets are subjected to the same hazards as people and have many of the same needs. Evacuating to a friend's home or pet-friendly hotel outside of the evacuation zone would be a good plan. If that isn't available, you can bring your cat or dog to our Pet-Friendly Shelter. Pet-Friendly shelters will be open in every storm; locations may vary.

Lee County Domestic Animal Services (LCDAS) manages this shelter. It is first-come, first-served, and there is no pre-registration required. You must shelter at the school with your pet (in other words, you cannot drop your pet at the shelter and leave). Owners are responsible for feeding, exercising and cleaning up after their pets.

Your pet will need a Hurricane Disaster Kit, too. Include water, non-perishable food, medications and clean-up supplies. You will need a crate or carrier, collar and leash, and up-to-date vaccination records for your pet. Having a recent photo of your pet will be helpful if you get separated.

Remember:

- Never leave your pets outside during a storm.
- Never leave a cat with a dog, even if the two are normally friends.
- Confine and keep small pets (birds, hamsters, etc.) away from cats and dogs.
- Dangerous animals should be secured in special crates or cages.
- LCDAS has a website on hurricane preparedness for your pets, filled with tips and information on how to get your pets ready. <https://www.leegov.com/animalservices/safety/hurricane>

For more information call Lee County Animal Services at 239-533-7387, or go to [www.LeeLostPets.com](http://www.LeeLostPets.com)



Click on the following links to find pet-friendly lodging in Florida and throughout the United States. You should pick a location outside of the area where the hurricane is projected to hit. Call ahead to make sure those hotels will accept your animals.

**Weapons, smoking and alcoholic beverages are prohibited at all shelters.**

### [Pets Welcome](#)

Evacuation shelters will not accept pets of any kind unless designated an "Evacuation Pet Shelter." Lee County's Evacuation Pet Shelter will be open for residents who live in areas that are under mandatory evacuation orders in the area where they live. This option should be your last resort if you are unable to execute your own personal evacuation plan for your family and pets. It should not be your "evacuation plan." View information about the Evacuation Pet Shelter.

<https://www.leegov.com/animalservices/safety/hurricane/evacuation-pet-shelter>

## **Pet Friendly Hotels in the Fort Myers Area**

### **Homewood Suites by Hilton Fort Myers Airport/FGCU**

16450 Corporate Commerce Way, Fort Myers, FL 33913-8252

[1 \(855\) 605-0316](tel:18556050316)

### **Candlewood Suites Fort Myers-Sanibel Gateway**

9740 Commerce Center Court, Fort Myers, FL 33908

[1 \(877\) 859-5095](tel:18778595095)

### **Residence Inn Fort Myers Sanibel**

20371 Summerlin Rd, Fort Myers, FL 33908

[1 \(844\) 631-0595](tel:18446310595)

### **Drury Inn & Suites Fort Myers Airport Fgcu**

9950 University Plaza Dr I-75 and Gulf Coast Town Center, Fort Myers, FL 33913-6014

[1 \(855\) 762-0738](tel:18557620738)

### **Hilton Garden Inn Fort Myers Airport/FGCU**

16410 Corporate Commerce Way, Fort Myers, FL 33913-8252

[1 \(855\) 618-4697](tel:18556184697)

### **La Quinta Inn & Suites by Wyndham Ft. Myers-Sanibel Gateway**

20091 Summerlin Rd, Fort Myers, FL 33908-3763

(941) 282-5875



# Evacuation Zones and Public Shelters

## Evacuation Zones and Public Shelters

For the most recent public shelter list, see our website at [www.LeeEOC.com](http://www.LeeEOC.com).

### Emergency Public Shelters

#### Cape Coral

1. Island Coast High School - 2125 DeNavarra Pkwy

#### Estero

2. Estero Recreation Center - 9200 Corkscrew Palms Blvd
3. Hertz Arena - 11000 Everblades Pkwy

#### Fort Myers

4. Dunbar High School - 30 Edison Ave
5. Gateway High School - 13820 Griffin Dr
6. South Fort Myers High School - 14020 Plantation Road
7. Treeline Elementary School - 10900 Treeline Ave

#### Lehigh Acres

8. Amanecer Elementary School - 641 Sunshine Blvd
9. East Lee County High School - 715 Thomas Sherwin Ave
10. Harns Marsh Elementary School - 1800 Unice Ave N
11. Harns Marsh Middle School - 1820 Unice Ave N
12. Mirror Lakes Elementary School - 525 Charwood Ave
13. Tortuga Preserve Elementary School - 1711 Gunnery Rd
14. Varsity Lakes Middle School - 801 Gunnery Rd N
15. Veterans Park Recreation Center - 49 Homestead Rd S

#### North Fort Myers

16. North Fort Myers Academy of the Arts - 1856 Arts Way
17. North Fort Myers Recreation Center - 2000 N Recreation Park Way

#### San Carlos

18. Alice Arena - 12181 FGCU Lake Pkwy E

#### Tice

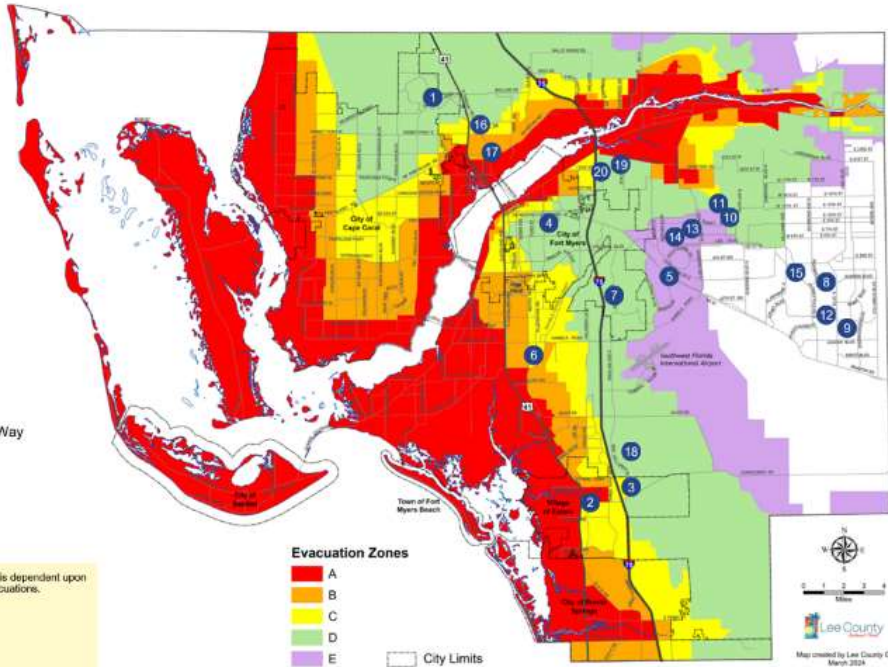
19. Manatee Elementary School - 5301 Tice St
20. Oak Hammock Middle School - 5321 Tice St

**Please be advised:** Not all shelters will be open for every event. The opening of shelters is dependent upon the nature of each specific event. Not sheltering will be offered in all shelters open for evacuations.

#### Know your Evacuation Zone:

Visit our website [www.LeeEOC.com](http://www.LeeEOC.com) to find your Evacuation Zone.

1. Click on 'Know My Evacuation Zone.' in the navigation bar
2. Click the Find My Evacuation link
3. Enter your address in the search bar





## Hurricanes and Flooding

The Atlantic hurricane season begins June 1 and ends November 30. Peak hurricane season is between August and October.

Hurricanes are not just coastal problems. They can affect residents along the major rivers and waterways in Southwest Florida to Lake Okeechobee.

There are specific risks associated with hurricanes such as wind, tornadoes, heavy rainfall and storm surge. Of these, the greatest risk to life is posed by storm surge and rainfall flooding.

### Storm Surge

Storm Surge is an abnormal rise of water generated by a tropical storm or hurricane. As these storms make landfall, they produce water level rise and strong winds that push water into shore. Storm surge forecasts do not account for large crashing waves or debris in the water.

Due to low elevation and proximity to beaches and other tidal waters, storm surge can travel far inland in Lee County.

### Flooding

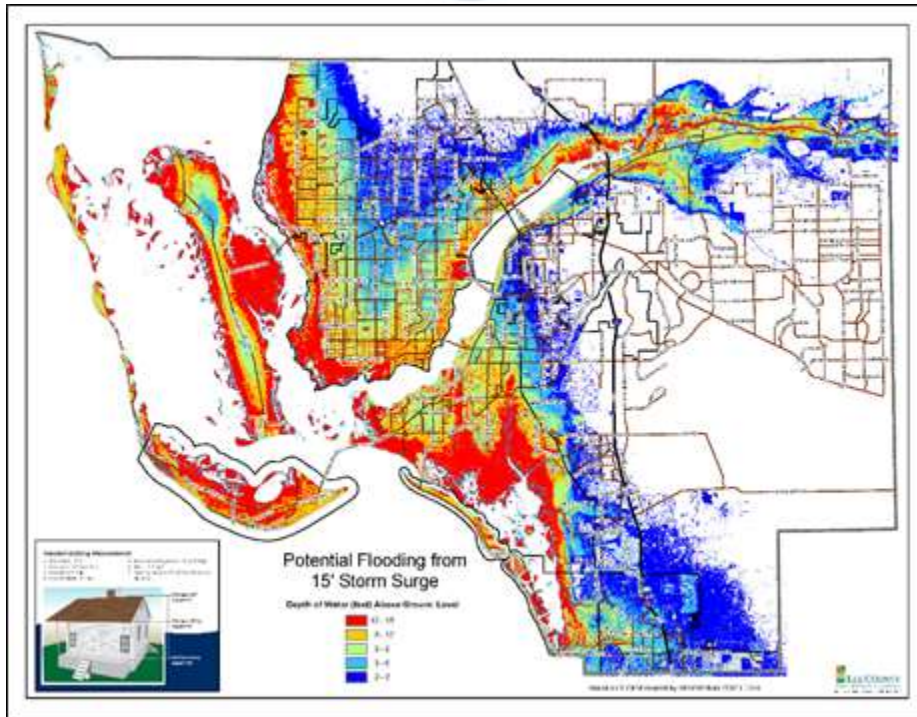
Heavy or prolonged rain can result in flooding. Prolonged rainfall saturates the ground and less of the water can be soaked up. Heavy rainfall can have less of a chance to be soaked up by the soil.

'Sheet flow' is a natural flow of water south through the Florida peninsula and may cause flooding along rivers, creeks and canals.

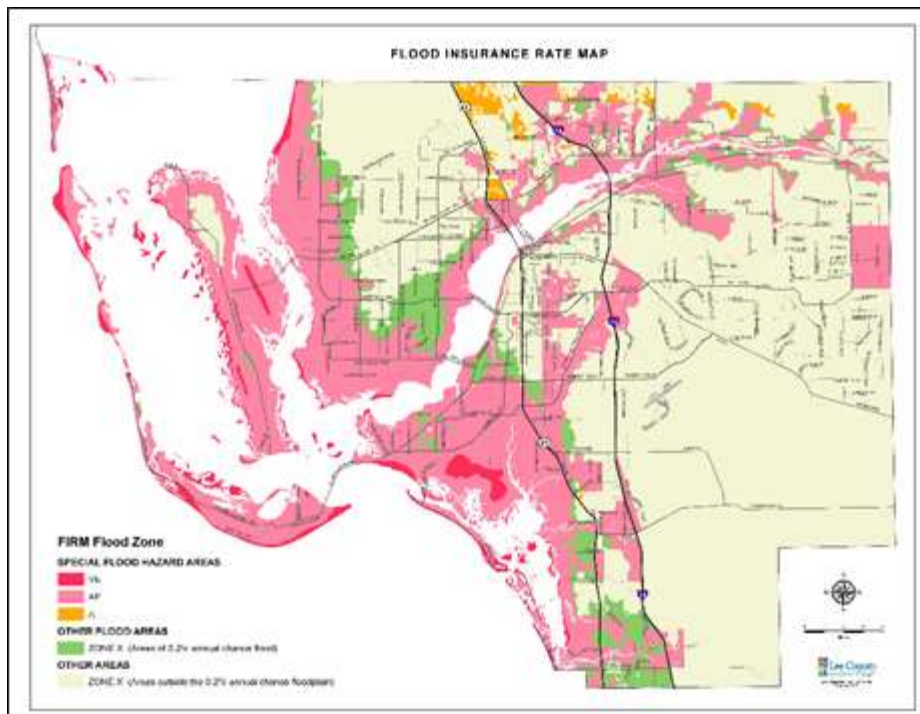
### Need to Know

1. Foundations of homes may fail.
2. Standing water may contain debris, chemicals, and raw sewage.
3. Electricity may be out – potentially for a long time.
4. Tap water may be unsafe for drinking, bathing or cooking.
5. Roadways & bridges may sustain heavy damage, be covered in water and/or debris.
6. Flood waters may contain debris, chemicals, and raw sewage.
7. Electricity cannot be restored with high water levels surrounding homes.
8. Well water may be unsafe for drinking, bathing or cooking.
9. Septic tanks may fail or become damaged.
10. Young children and animals can drown, be injured, or become severely ill from playing or swimming in flood waters.

Be Prepared, Stay Safe, Stay Dry!



Storm Surge Zone Maps are used to determine evacuations. These are areas that may be submerged by an abnormal rise of water pushed onto shore by a hurricane or storm event.





Flood Zone Maps (Flood Insurance Rate Maps (FIRMs)) are used to determine flood insurance premium rates and building code requirements. Geographic areas that FEMA has defined according to varying levels of flood risk.

## **STORM TERMINOLOGY**

A warning is more serious than a watch.

- Tropical Storm Watch: Tropical storm conditions are possible in the watch area within 36 hours.
- Tropical Storm Warning: Tropical storm conditions are expected within 24 hours. Stay in touch with weather broadcasts.
- Hurricane Watch: Hurricane conditions possible within 36 hours. Take necessary precautions to secure your apartment.
- Hurricane Warning: Hurricane conditions expected within 24 hours. Revise your hurricane plan and prepare to carry it out.



## Hurricane Strength and Types of Damage

The Saffir-Simpson Hurricane Wind Scale is a 1 to 5 rating based only on a hurricane's maximum sustained wind speed. **This scale does not take into account other potentially deadly hazards such as storm surge, rainfall flooding, and tornadoes.**

The Saffir-Simpson Hurricane Wind Scale estimates potential property damage. While all hurricanes produce life-threatening winds, hurricanes rated Category 3 and higher are known as major hurricanes\*. Major hurricanes can cause devastating to catastrophic wind damage and significant loss of life simply due to the strength of their winds. Hurricanes of all categories can produce deadly storm surge, rain-induced floods, and tornadoes. These hazards require people to take protective action, including evacuating from areas vulnerable to storm surge.

\*In the western North Pacific, the term "super typhoon" is used for tropical cyclones with sustained winds exceeding 150 mph.

Category	Sustained Winds	Types of Damage Due to Hurricane Winds
1	74-95 mph 64-82 kt 119-153 km/h	<b>Very dangerous winds will produce some damage:</b> Well-constructed frame homes could have damage to roof, shingles, vinyl siding and gutters. Large branches of trees will snap and shallowly rooted trees may be toppled. Extensive damage to power lines and poles likely will result in power outages that could last a few to several days.
2	96-110 mph 83-95 kt 154-177 km/h	<b>Extremely dangerous winds will cause extensive damage:</b> Well-constructed frame homes could sustain major roof and siding damage. Many shallowly rooted trees will be snapped or uprooted and block numerous roads. Near-total power loss is expected with outages that could last from several days to weeks.
3 (major)	111-129 mph 96-112 kt 178-208 km/h	<b>Devastating damage will occur:</b> Well-built framed homes may incur major damage or removal of roof decking and gable ends. Many trees will be snapped or uprooted, blocking numerous roads. Electricity and water will be unavailable for several days to weeks after the storm passes.
4 (major)	130-156 mph 113-136 kt 209-251 km/h	<b>Catastrophic damage will occur:</b> Well-built framed homes can sustain severe damage with loss of most of the roof structure and/or some exterior walls. Most trees will be snapped or uprooted and power poles downed. Fallen trees and power poles will isolate residential areas. Power outages will last weeks to possibly months. Most of the area will be uninhabitable for weeks or months.
5 (major)	157 mph or higher 137 kt or higher 252 km/h or higher	<b>Catastrophic damage will occur:</b> A high percentage of framed homes will be destroyed, with total roof failure and wall collapse. Fallen trees and power poles will isolate residential areas. Power outages will last for weeks to possibly months. Most of the area will be uninhabitable for weeks or months.